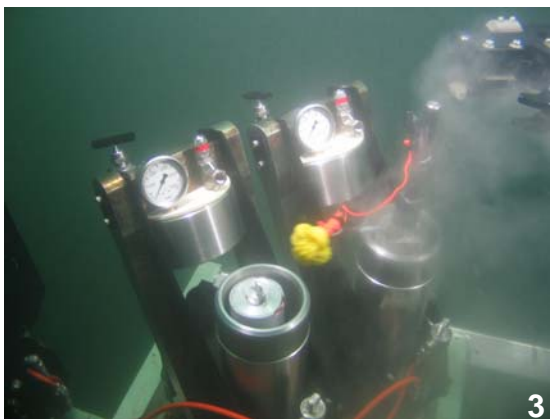
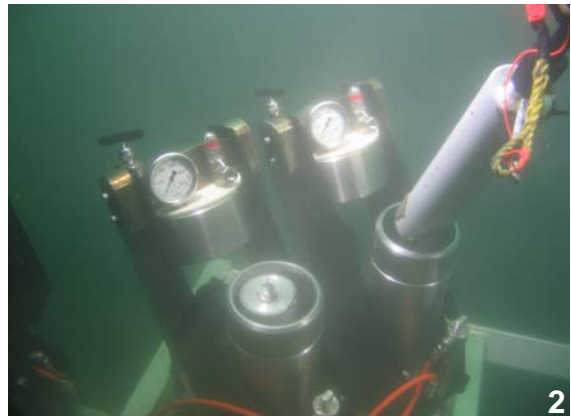


# Hyperbaric Isothermal Clathrate Sampler (Clathrate Sampler)

Designed for science/research, ISE's proprietary Hyperbaric Isothermal Clathrate Sampler (Clathrate Sampler) is the newest in ISE's suite of recovery equipment and tools.

Gas hydrates are deposits of frozen methane located on or under the deep ocean floor. Highly recognized as an alternate source of energy, the frozen gas hydrates are collected by way of the Clathrate Sampler's unique and successfully designed hyperbaric isothermal chambers.

The Clathrate Sampler provides a stable environment for transporting pressure and temperature sensitive Clathrate formations from the sea floor to the surface. Each hyperbaric chamber maintains up to 4000 meters of sea water pressure on a push core sample. It is also insulated to ensure thermal stability of the sample during ascent and while the assembly is removed from the ROV when on deck.



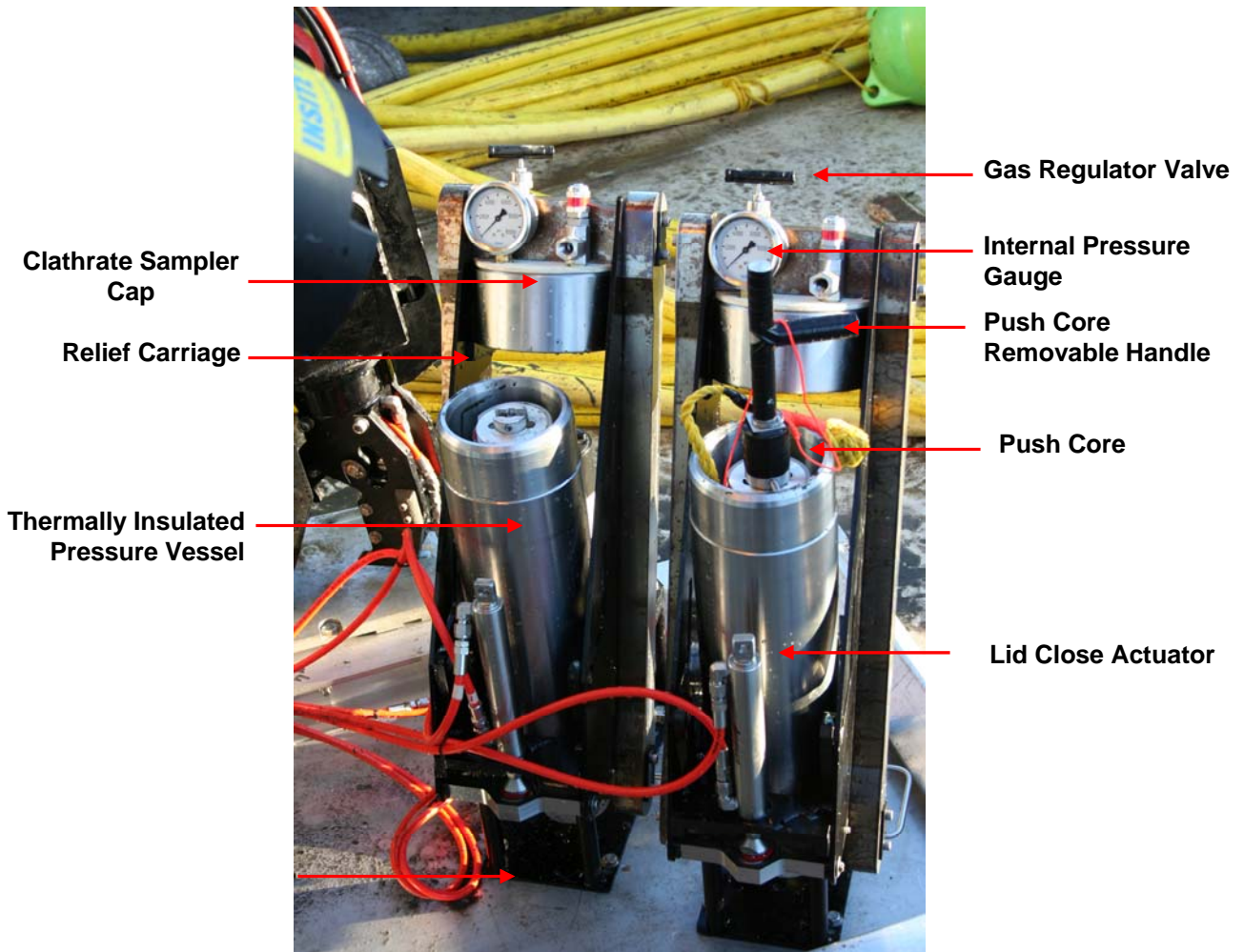
**International Submarine Engineering Ltd.**

1734 Broadway Street, Port Coquitlam, British Columbia, V3C 2M8 Canada

T: +1.604.942.5223 F: +1.604.942.7577 W: [www.ise.bc.ca](http://www.ise.bc.ca) E: [info@ise.bc.ca](mailto:info@ise.bc.ca)

# Hyperbaric Isothermal Clathrate Sampler (Clathrate Sampler)

The Clathrate Sampler is equipped with valves and fittings that allow the assembly to be connected to analyzers and or storage devices. After the fittings are connected the clathrate sample gas can then be pressure regulated and released into a customer supplied analyzer for quantification of the composition.



Installation, technical support and servicing form part of ISE's customer's experiences. For more information on ISE's Hyperbaric Isothermal Clathrate Sampler, please contact us.



## International Submarine Engineering Ltd.

1734 Broadway Street, Port Coquitlam, British Columbia, V3C 2M8 Canada  
T: +1.604.942.5223 F: +1.604.942.7577 W: [www.ise.bc.ca](http://www.ise.bc.ca) E: [info@ise.bc.ca](mailto:info@ise.bc.ca)